



Multi-Year Plan for Student Learning and Accommodation Planning

WESTERN AREA REVIEW

Bell HS

Bells Corners PS
Lakeview PS
Bayshore PS
D.A. Moodie IS

Merivale HS

Century PS
Sir Winston Churchill PS
Meadowlands PS
Carleton Heights PS

Sir Robert Borden HS

Leslie Park PS
Briargreen PS
Knoxdale PS
Greenbank MS
Manordale PS

Grant Alternative*
Churchill Alternative*

Woodroffe HS

Agincourt Road PS
J.H. Putman PS
D. Roy Kennedy PS
Pinecrest PS
Regina Street PS
Severn Avenue PS
Woodroffe Avenue PS

WESTERN AREA REVIEW

The Ottawa-Carleton District School Board (OCDSB) is undertaking a review of schools and program offerings across the District. These reviews consider grade configurations, programs, school condition, student enrolment and excess pupil space within a “family of schools”. For example, the Western Area Review includes 4 families of schools — Bell High School, Merivale High School, Sir Robert Borden High School, Woodroffe High School and all of the elementary schools that feed into these high schools.

As part of the review process, staff must present recommendations for change. These changes can include school closures and consolidations, as well as changes in program offerings, grade configuration, and school boundaries. These can be difficult changes, but are necessary because the school district has excess pupil space and will experience a reduction in funding. The cost of empty pupil spaces takes money out of the classroom and negatively impacts all students. Over the next six months, the school district will consult with the community on the proposed changes and the Board will make a final decision in March.

The Western Area Pupil Accommodation Review is scheduled to begin in September, 2016. There are currently 3,837 excess pupil spaces in the Western Area. The proposed changes would reduce the excess pupil space by 2,074, increasing the overall utilization of schools in the area to 85%.

The following 26 schools (22 elementary; 4 secondary) are involved in the Western Area Review:

Bell HS	Merivale HS	Sir Robert Borden HS	Woodroffe HS
Bells Corners PS Lakeview PS Bayshore PS D.A. Moodie IS	Century PS Sir Winston Churchill PS Meadowlands PS Carleton Heights PS	Leslie Park PS Briargreen PS Knoxdale PS Greenbank MS Manordale PS Grant Alternative* Churchill Alternative*	Agincourt Road PS J.H. Putman PS D. Roy Kennedy PS Pinecrest PS Regina Street PS Severn Avenue PS Woodroffe Avenue PS

**For the purposes of the Western Review, the two alternative schools are included in the Sir Robert Borden family of schools*

SUMMARY OF RECOMMENDATIONS FOR CHANGE

In developing the following recommendations, all of the programs and services delivered in these school communities were carefully reviewed to determine how best to realign resources to provide wider program opportunities for students, better access to programs of choice and facilities that are in better condition to support learning.

A high level summary of recommended changes is as follows:

- Bell High School would become a grade 7–12 school;
- D. Aubrey Moodie Intermediate School would close;
- Bells Corners Public School, Lakeview Public School and Bayshore Public School would become grades K–6 schools, with Bells Corners PS offering EFI, Lakeview PS offering ENG and MFI and Bayshore PS offering ENG;
- Sir Robert Borden High School would become a grade 7–12 school;
- Greenbank Middle School would close;
- Leslie Park Public School would close and its students would attend Briargreen Public School;
- Grant Alternative School would close and its students would attend Churchill Alternative School;

- The Middle French Immersion boundary (currently directed to Knoxdale PS/Greenbank PS) bounded by Baseline Road, The Queensway, Woodroffe Avenue and Greenbank Road would be directed to D. Roy Kennedy PS and would become part of the Woodroffe Family of Schools;
- Merivale High School would become a grade 7–12 school and (upon certification) would offer the West End International Baccalaureate Program;
- Century Public School would close and its students would attend either Carleton Heights Public School or Meadowlands Public School depending on place of residence;
- Regina Street Public School would close and its students would attend D. Roy Kennedy Public School;
- JH Putman Public School would close and its English students would attend Pinecrest Public School and its Early French Immersion program students would attend either Agincourt Road Public School or Woodroffe Avenue Public School, depending on place of residence;
- Agincourt Road Public School and Woodroffe Avenue Public School would become K–8 schools; and
- Severn Avenue Public School would become an EFI centre for immersion students, the Woodroffe Elementary School French Immersion boundary would be changed and the current Severn ENG students would attend Pinecrest Public School or D. Roy Kennedy Public School depending on place of residence.

More detailed recommendations for each family of schools is outlined below and is available on the district website at www.ocdsb.ca.

BELL FAMILY OF SCHOOLS: AN OVERVIEW

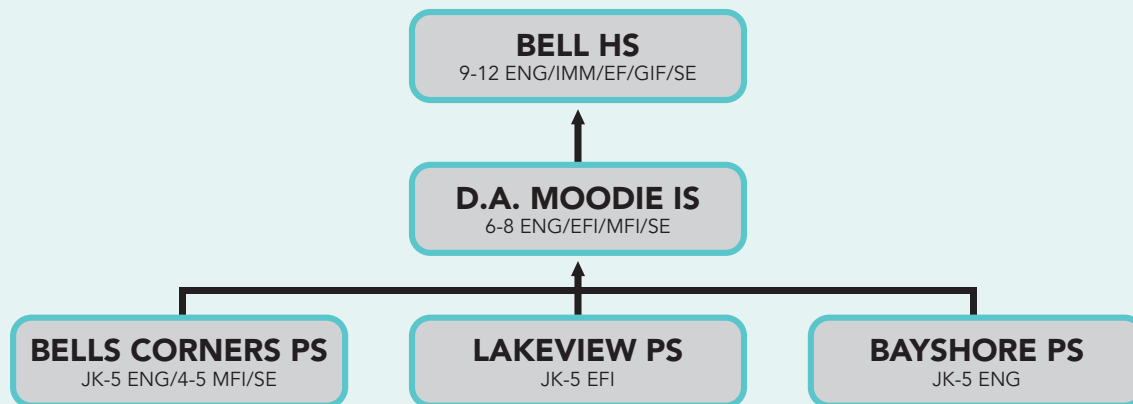
The Bell Family of Schools includes Bell High School, D. Aubrey Moodie Intermediate School, Bells Corners Public School, Bayshore Public School, and Lakeview Public School.

Currently there are 738 projected excess pupil spaces in this family of schools. The utilization rates for the three grade K–5 schools in the area vary dramatically: Bayshore Public School and Bells Corners PS have utilization rates of 46% and 58% respectively while Lakeview Public School is projected to have a utilization of 114% in 2017. The proposed plan will bring the overall utilization factor in the Bell High School family of schools from 75% to 90% (a reduction of 502 pupil spaces) and will reassign programs with higher enrolment into larger school buildings, and will minimize the number of school transitions that students have to make.

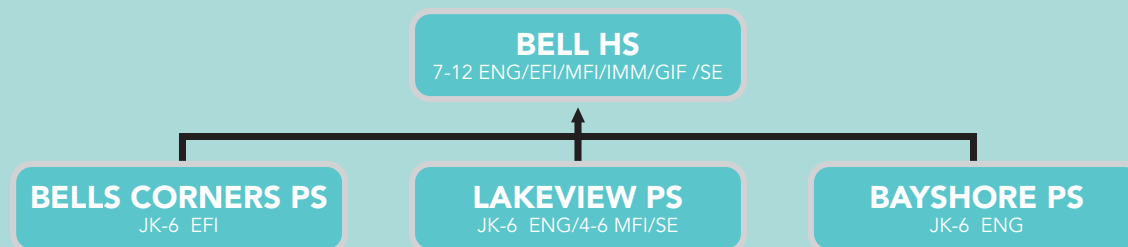
Proposed Plan for Change:

1. Bell High School would become a grade 7–12 school;
2. D. A. Moodie Intermediate School would close;
3. D. A. Moodie Intermediate School grade 7 & 8 students would attend Bell High School and the grade 6 students would attend their new grade JK–6 school based on program choice;
4. Bayshore Public School would become a single track JK–6 English program site;
5. Bells Corners Public School would become a single track JK–6 EFI program site; and
6. Lakeview Public School would become a dual track JK–6 English and MFI program site.

The Bell High School family of school's current enrolment feeding pattern BEFORE proposed changes:



The Bell High School family of school's enrolment feeding pattern AFTER proposed changes:



MERIVALE FAMILY OF SCHOOLS: AN OVERVIEW

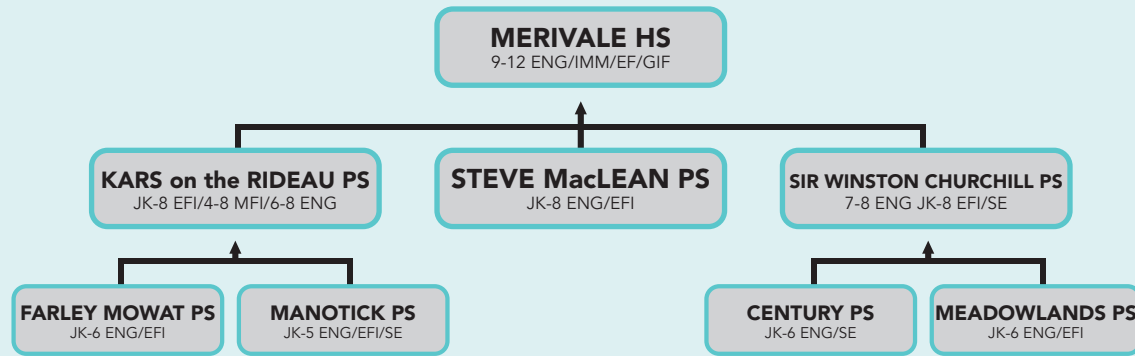
The Merivale Family of Schools includes Merivale High School, Sir Winston Churchill Public School, Century Public School, and Meadowlands Public School.

There are 3313 pupil spaces in this area and total enrolment is 2,051 or 62%. There are considerable differences in the utilization rates of schools, but several of them are well below optimal use. The availability of space and the location of Merivale High School were two factors which were critical to the recommendation that Merivale become a 7–12 school and a candidate for the second International Baccalaureate Program site in the western area of the District. Currently there are 1,297 projected excess pupil spaces in the Merivale family of schools. The proposed plan of action will bring the overall factor from 61% to 69% (a reduction of 413 surplus spaces). It consolidates programs to provide better resource alignment to support student learning and provides a better balance of program offerings within a geographic area.

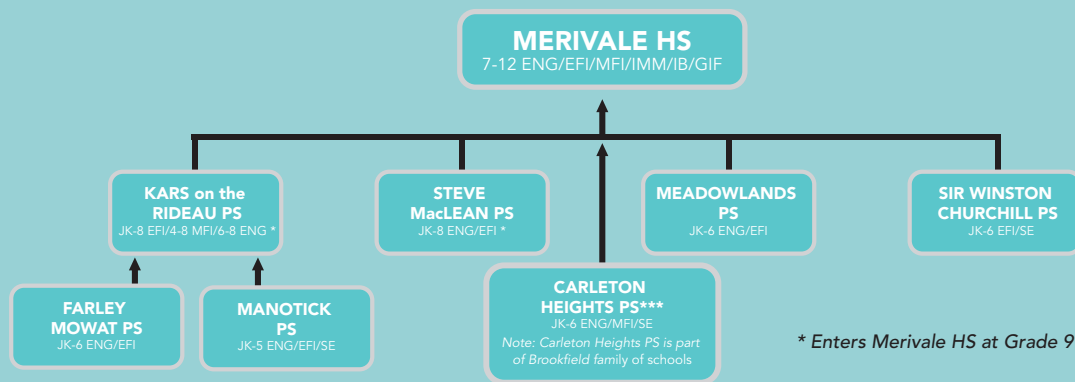
Proposed Plan for Change

1. Merivale High School would become a grade 7–12 school;
2. Grade 7 & 8 students from Sir Winston Churchill and Carleton Heights Public School would attend Merivale High School;
3. Merivale High School would offer an International Baccalaureate Program (subject to certification);
4. Century Public School would close;
5. Sir Winston Churchill Public School would become a single track grade JK–6 EFI centre;
6. Carleton Heights Public School would become a dual track grade JK–6 English and MFI site;
7. Meadowlands would remain a JK–6 dual track English and EFI site; and
8. Students from Century Public School would be directed to either Meadowlands PS or Carleton Heights PS for grades JK–6, dependent on program choice and home location.

The Merivale High School Family of Schools current enrolment feeding pattern BEFORE changes:



The Merivale High School Family of Schools enrolment feeding pattern AFTER changes:



The Western Area review includes Merivale HS, Sir Winston Churchill PS, Century PS, Carleton Heights PS and Meadowlands PS. The other schools on this flow chart will be included in future area reviews.

SIR ROBERT BORDEN FAMILY OF SCHOOLS: AN OVERVIEW

This Family of Schools includes Sir Robert Borden High School, Greenbank Middle School, Briargreen Public School, Knoxdale Public School, Leslie Park Public School and Manordale Public School. For the purpose of discussion, Grant Alternative School and Churchill Alternative School have been included in this family of schools.

Utilization rates for schools in this area vary widely; elementary schools go from 38% (Grant AS) and 43% (Leslie Park PS) to utilization of 155% (Knoxdale PS). Two other schools, Briargreen PS and Greenbank MS are below optimal use; 65% and 69% respectively. This imbalance of space utilization is not aligned to the potential capacity of the schools and the programs that are currently located in the area schools are not situated in the optimum location for program capacity.

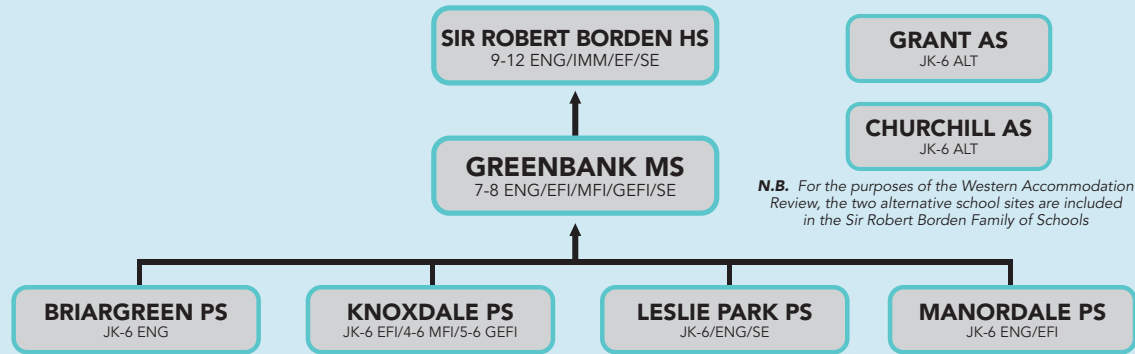
Within the current elementary feeding patterns for the Sir Robert Borden family of schools, there is a need to realign an inconsistent geographic anomaly for students in the MFI program. The areas located north of Baseline road and south of Highway 417 are part of the Woodroffe HS attendance boundary. All EFI and ENG students residing in this area are directed to elementary schools which feed to Woodroffe HS. However, students who choose MFI are directed to Knoxdale PS for grades 4–6 and to Greenbank MS for grades 7–8.

Proposed Plan for Change

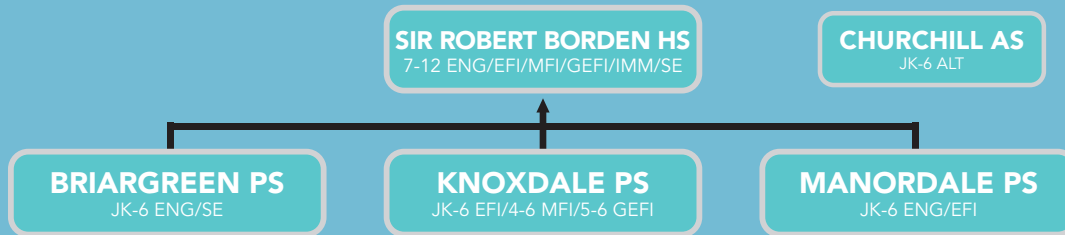
1. Sir Robert Borden High School would become a grade 7–12 school;
2. Greenbank Middle School would close;
3. Greenbank Middle School's grade 7 and 8 students would attend Sir Robert Borden High School;

4. Leslie Park Public School would close and its students would be relocated to Briargreen Public School; and
5. Knoxdale Public School would continue as a dual track grade JK-6 EFI and MFI site.
6. Grant Alternative School would close.

The Sir Robert Borden High School Family of Schools current enrolment feeding pattern BEFORE changes:



The Sir Robert Borden High School Family of Schools enrolment feeding pattern AFTER changes:



WOODROFFE FAMILY OF SCHOOLS: AN OVERVIEW

This Family of Schools includes Woodroffe High School, Agincourt Road Public School, D. Roy Kennedy Public School, J.H. Putman Public School, Pinecrest Public School, Regina Street Public School, Severn Avenue Public School and Woodroffe Avenue Public School.

Projected 2017 utilization rates for schools in this area vary: one school is underutilized at 45% (Severn Avenue PS) and three others (D. Roy Kennedy PS, Pinecrest PS and Regina Street PS) are well below optimal use having rates in the lower 50% range. Two are projected to be minimally over capacity at 103% (Agincourt Road PS and J.H. Putman PS). There are issues with feeding patterns in this area as well as program offerings relative to school capacity.

The proposed plan provides a better balance of programs and opportunities within a geographic area and within available resources. The proposal sees a better match of the schools in the area to the program offerings and the projected number of students in those programs over time.

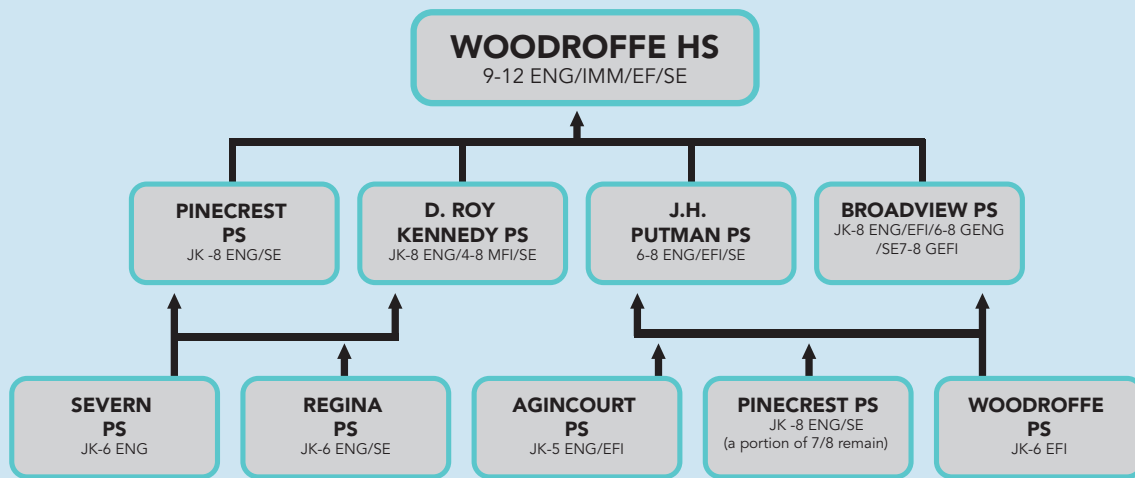
The proposed plan would minimize the number of transitions for students. Areas located north of Baseline road and south of Highway 417 are part of the Woodroffe HS attendance boundary. All EFI and ENG students residing in this area are directed to elementary schools which feed to Woodroffe HS. However, students who choose MFI are directed to Knoxdale PS for grades 4–6 and to Greenbank MS for grades 7–8. They must then leave and attend Woodroffe HS rather than Sir Robert Borden HS.

As part of this study, it is recommended that the MFI students from this area be directed to D. Roy Kennedy PS for grades 4-8. The high school catchment would remain Woodroffe HS.

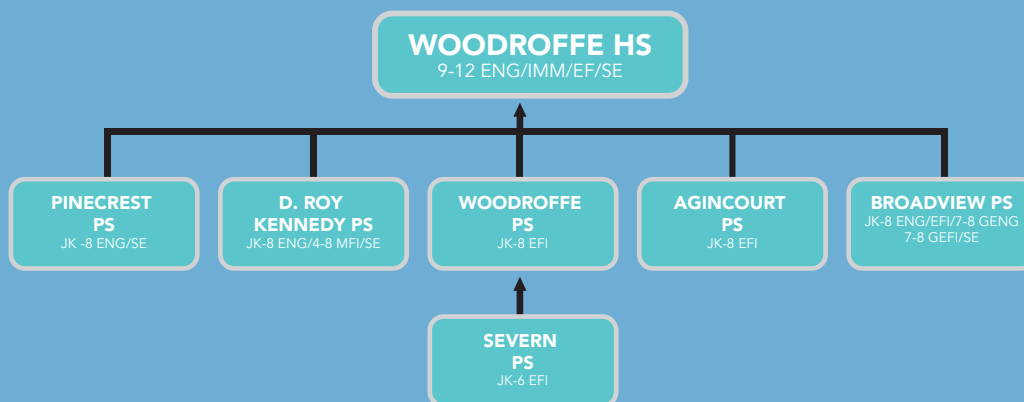
Proposed Plan for Change

1. J.H. Putman Public School would close and its students would attend Agincourt Road PS, Woodroffe Avenue PS or Pinecrest PS dependent on program choice and home location;
2. Severn Avenue Public School would change from an English program school to a new grade JK-6 EFI centre and new EFI boundaries would be drawn for the area. Its English program students would be redirected to Pinecrest Public School or D. Roy Kennedy Public School based on home location;
3. Regina Street Public School would close and its students would be redirected to D. Roy Kennedy PS;
4. Woodroffe Avenue Public School would become a single track grade JK-8 EFI centre with redrawn EFI boundaries; and
5. Agincourt Road Public School would become a single track grade JK-8 EFI centre with its English program students relocated to Pinecrest Public School.

The Woodroffe High School Family of Schools current enrolment feeding pattern BEFORE changes:



The Woodroffe High School Family of Schools enrolment feeding pattern AFTER changes:



TIMELINES

Sept. 7, 2016	Staff report presented to Committee of the Whole
Sept. 13, 2016	Board approval of Accommodation Review Process and Consultation
Sept. 15 – Oct. 9, 2016	Invited to share thoughts in Phase 1 of Thoughtexchange online platform
Oct. 24 – Nov. 20, 2016	Invited to star/prioritize thoughts in Phase 2 of Thoughtexchange
Oct. 27, 2016	First Public Meeting for Western Area Review
Nov. 9 & Dec. 6, 2016	Accommodation Review Committee Meetings
Dec. 5, 2016	Results from Thoughtexchange will be shared
Jan. 10, 2017	Second Public Meeting for Western Area Review
Jan. 27, 2017	Final staff report is published
Feb. 13, 2017	Committee of the Whole – Consider final staff report for Western Area
Mar. 1, 2017	Board Meeting – final decision for Western Area

HOW TO GET INVOLVED?

Consultation is a critical element of the review process. Our goal is to inform the community of the proposed changes, encourage discussion about the recommendations, and seek input which can inform implementation. Feedback from parents, staff, students, community partners/associations, and the general public is strongly encouraged. There are a number of ways to get involved:

1) Public Meetings

There will be two public meetings. Each meeting will include a presentation from Board staff and an opportunity for open interaction. These meetings will be open to all who are interested. This forum is ideal for stakeholders who want to expand their understanding of the recommendations.

2) Pupil Accommodation Review Committee

There will be an advisory committee made up of one representative from each school in the review area. The committee serves as an advisory body by reviewing materials and commenting on the report presented by Board staff. The role of the school council representative is to share information with the committee and back to their school community. This forum is ideal for stakeholders who have a high level of participation in formal meetings and business processes at the school and District level.

3) Online Community Engagement and Discussion

Using the online insight platform Thoughtexchange, stakeholders will be invited to share their thoughts on the proposed changes and to star/prioritize the thoughts of others. The platform gives those involved the opportunity to provide input about what is important to them, anytime of day, from any location. This is the ideal forum for stakeholders who want to provide input but are not inclined to go to meetings.

MORE INFORMATION

You can read the full report and find much more detailed information on the district website at www.ocdsb.ca. If you have questions or concerns regarding the proposed changes for the Western Area Review, please email westernareareview@ocdsb.ca.

MANAGING TRANSITIONS

The final recommendations brought forward after the consultation period will include language relating to transitions. This could include such things as grandfathering of younger siblings of current older students with the provision that the grade offering and program of choice remain at the same school. There is no intent to repatriate students attending schools on approved transfer to their home school; rather these students would be permitted to follow their cohort to the newly-designated school. Transfer students will continue to be considered as cross-boundary for the purposes of transportation eligibility. In cases where students are directed to more than one school, transfer students would generally be given a choice of receiving schools to attend.